



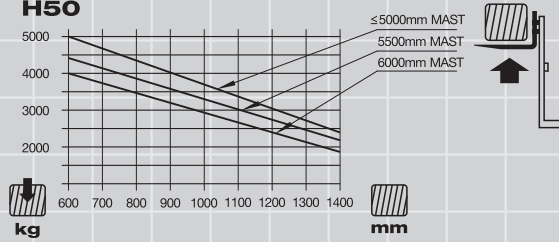
## **SPECIFICATION**

---

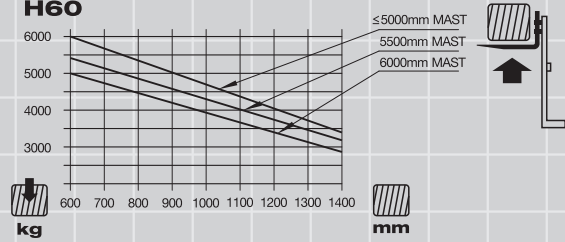
**HEAVY DUTY  
FORKLIFT TRUCK**

**5.0-10ton**

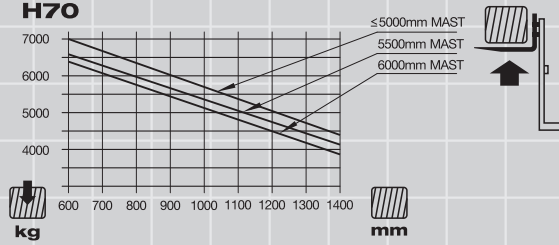
### H50



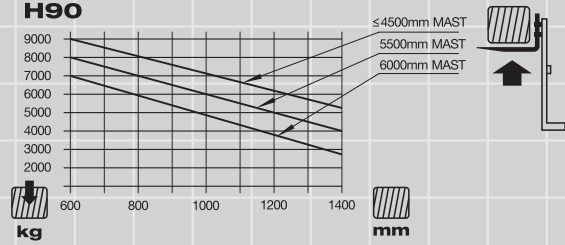
### H60



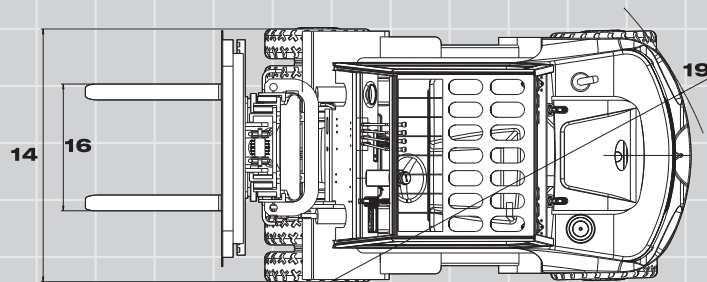
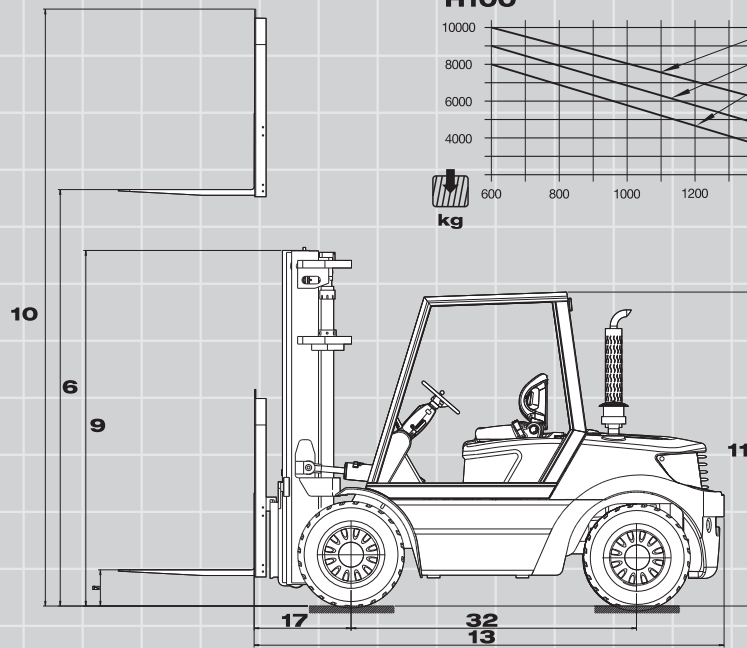
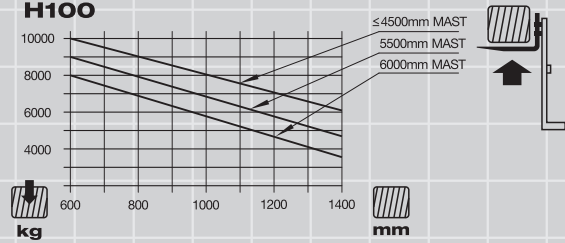
### H70



### H90



### H100



GENERAL	1	Manufacturer		RY	RY	RY	RY	RY	RY	RY	RY	RY	RY	RY	RY		
	2	Model		H50C	H60C	H70C	H90C	H100C	H50A	H60A	H70A	H90A	H100A	H50B	H60B	H70B	
	3	Power Type		Diesel	Diesel	Diesel	Diesel	Diesel	Diesel	Diesel	Diesel	Diesel	Diesel	Diesel	Diesel	Diesel	
	4	Rated Load Capacity	kg	5000	6000	7000	9000	10000	5000	6000	7000	9000	10000	5000	6000	7000	
	5	Load Centre	mm	600	600	600	600	600	600	600	600	600	600	600	600	600	
CHARACTERISTIC & DIMENSION	6	Rated Lift Height	mm	3000	3000	3000	3000	3000	3000	3000	3000	3000	3000	3000	3000	3000	
	7	Free Lift Height	mm	205	205	210	130	130	205	205	210	130	130	205	205	210	
	8	Mast Tilt Angle (F/R, α°/β°)	Deg	6°/12°	6°/12°	6°/12°	6°/12°	6°/12°	6°/12°	6°/12°	6°/12°	6°/12°	6°/12°	6°/12°	6°/12°	6°/12°	
	9	Mast Lowered Height	mm	2500	2500	2625	2850	2850	2500	2500	2625	2850	2850	2500	2500	2625	
	10	Mast Extended Height (With Backrest)	mm	4420	4420	4420	4015	4015	4420	4420	4420	4015	4015	4420	4420	4420	
	11	Overhead Guard Height	mm	2485	2485	2485	2610	2610	2485	2485	2485	2610	2610	2485	2485	2485	
	12	Ground Clearance (Bottom of Mast)	mm	200	200	200	250	250	200	200	200	250	250	200	200	200	
	13	Length to Face of Fork (Without Fork)	mm	3530	3530	3620	4300	4300	3530	3530	3620	4300	4300	3530	3530	3620	
	14	Overall Width	mm	1995	1995	1995	2165	2165	1995	1995	1995	2165	2165	1995	1995	1995	
	15	Fork Size (L×W×T)	mm	1220×150×55	1220×150×60	1220×150×65	1220×175×80		1220×150×55	1220×150×60	1220×150×65	1220×175×80		1220×150×55	1220×150×60	1220×150×65	
	16	Fork Overhang (Wheel Center to Fork Face)	mm	585	585	595	710	710	585	585	595	710	710	585	595	595	
	17	Rear Overhang	mm	670	670	750	790	790	670	670	750	790	790	670	670	750	
	18	Turning Radius (Outside)	mm	3290	3290	3370	3920	3920	3290	3290	3370	3920	3920	3280	3280	3360	
	19	"Min.Right Angle Stacking Aisle Width Add Load Length and Clearance")	mm	5215	5215	5315	5845	5915	5215	5215	5315	5845	5915	5215	5215	5315	
PERFORMANCE	20	Travel Speed (No Load)	km/h	28	28	28	30	30	30	30	28	30	30	27	26	26	
	21	Lifting Speed (Full Load)	mm/sec	400	400	330	310	310	500	500	460	310	310	400	400	330	
	22	Lowering Speed (Full Load)	mm/sec	500	500	500	500	500	500	500	500	500	500	500	500	500	
	23	Max.Drawbar Pull (Full Load)	KN	53	53	52	57	57	54	54	53	57	57	45	45	43	
	24	Max.Gradeability (Full Load)	%	32	27	24	≤20	≤20	35	32	29	≤20	≤20	20	20	20	
	25	Service Brake (Operation/Control)		Foot/Powershift				Foot/Powershift				Foot/Powershift					
	26	Parking Brake (Operation/Control)		Hand/Mechanical				Hand/Mechanical				Hand/Mechanical					
CHASSIS	27	Tyre (Front x 4)	mm	8.25-15-14PR			9.00-20-14PR			8.25-15-14PR			9.00-20-14PR		8.25-15-14PR		
	28	Tyre (Rear x 2)	mm	8.25-15-14PR			9.00-20-14PR			8.25-15-14PR			9.00-20-14PR		8.25-15-14PR		
	29	Front Tread	mm	1470	1470	1470	1600	1600	1470	1470	1470	1600	1600	1470	1470	1470	
	30	Rear Tread	mm	1700	1700	1700	1700	1700	1700	1700	1700	1700	1700	1700	1700	1700	
	31	Wheelbase	mm	2250	2250	2250	2800	2800	2250	2250	2250	2800	2800	2250	2250	2250	
WEIGHT	32	Total Weight	kg	8000	8750	9450	12200	12900	7980	8640	9350	12200	12900	7980	8640	9350	
	33	Front Axle Weight Distribution (Full Load)	kg	11600	13050	14600	19980	20610	11660	13050	14570	19980	20610	11660	13050	14570	
	34	Rear Axle Weight Distribution (Full Load)	kg	1400	1700	1850	2220	2290	1320	1590	1780	2220	2290	1320	1590	1780	
	35	Front Axle Weight Distribution (No Load)	kg	4050	3900	3850	5380	5660	4010	3880	3860	5380	5660	4010	3880	3860	
	36	Rear Axle Weight Distribution (No Load)	kg	3950	4850	5600	6820	8240	3970	4760	5490	6820	8240	3970	4760	5490	
POWER & TRANSMISSION	37	Battery	V/Ah	24/90	24/90	24/90	24/90	24/90	24/90	24/90	24/90	24/90	24/90	24/90	24/90	24/90	
	38	Engine Model		6102BG6						A-6BG1QC						S6S-T(Eu III)	
	39	Engine Manufacturer		CHAOCHAI						ISUZU						MITSUBISHI	
	40	Rated Output / r.p.m.	kw	80.9/2500						82/2000						63.9/2300	
	41	Rated Torque / r.p.m.	N·m	353/1650						416/1400—1600						285/1700	
	42	No.of Cylinder		6	6	6	6	6	6	6	6	6	6	6	6	6	
	43	Bore x Stroke	mm	102×118	102×118	102×118	102×118	102×118	105×125	105×125	105×125	105×125	105×125	105×125	94×120	94×120	94×120
	44	Displacement	L	5.785	5.785	5.785	5.785	5.785	6.494	6.494	6.494	6.494	6.494	4.966	4.966	4.966	
	45	Fuel Tank Capacity	L	120	120	120	120	120	120	120	120	120	120	120	120	120	
	46	Transmission Type		Powershift				Powershift				Powershift					
	47	Transmission Stage (FWD/RVS)		2/2	2/2	2/2	2/2	2/2	2/2	2/2	2/2	2/2	2/2	2/2	2/2	2/2	
	48	Operating Pressure (For Attachments)	Mpa	17	17	17	17	17	17	17	17	17	17	17	17	17	

\* All Rights Reserved by RY Forklift.



MAST TYPE	MAST NAME	MAX. FORK HEIGHT (mm)	LOAD CAPACITY(LOAD CENTRE 600mm)(kg)					TILT ANGLE	
			H50	H60	H70	H90	H100	H50/H60/H70	H90/H100
2-Stage Wide View Mast	M300	3000	5000	6000	7000	9050	10000	6-12	
	M330	3300	5000	6000	7000	9050	10000	6-12	
	M350	3500	5000	6000	7000	9050	10000	6-12	
	M400	4000	5000	6000	7000	9050	10000	6-12	
	M450	4500	5000	6000	7000	9050	10000	6-6	
	M500	5000	5000	6000	7000	8050	10000	6-6	
	M550	5500	4750	5700	6600	8030	9000	3-6	
	M600	6000	4400	5400	6400	8015	8000	3-6	
2-Stage Full Free Wide View Mast	FM300	3000	5000	6000	7000	9000	10000	6-12	
	FM330	3300	5000	6000	7000	9000	10000	6-12	
	FM350	3500	5000	6000	7000	9000	10000	6-12	
	FM370	3700	5000	6000	7000	9000	10000	6-12	
	FM400	4000	5000	6000	7000	9000	10000	6-12	
3-Stage Full Free Wide View Mast	TFM430	4300	4500	5600	6500	7800	8000	6-12	
	TFM450	4500	4500	5600	6500	7800	7800	6-12	
	TFM470	4700	4500	5600	6500	7200	7500	6-6	
	TFM500	5000	4500	5600	6500	7200	7500	6-6	
	TFM550	5500	4200	5300	6300	6800	7000	3-6	
	TFM600	6000	4000	5000	6000	6000	6000	3-6	

MAST TYPE	MAST NAME	OVERALL HEIGHT							
		LOWERED	EXTENDED		LOWERED	EXTENDED		LOWERED	EXTENDED
			WITHOUT / WITH BACKREST			WITHOUT / WITH BACKREST			
		H50/H60		H70		H90/H100			
2-Stage Wide View Mast	M300	2500	3830 / 4420		2625	3830 / 4420		2850	4015
	M330	2650	4130 / 4720		2775	4130 / 4720		3000	4315
	M350	2750	4330 / 4920		2875	4330 / 4920		3100	4515
	M400	3050	4830 / 5420		3175	4830 / 5420		3400	4800
	M450	3300	5330 / 5920		3425	5330 / 5920		3650	5250
	M500	3550	5830 / 6420		3675	5830 / 6420		3900	5800
	M550	3850	6330 / 6920		3975	6330 / 6920		4200	6250
	M600	4100	6830 / 7420		4225	6830 / 7420		4450	6600
2-Stage Full Free Wide View Mast	FM300	2045	3780 / 4370		2460	3780 / 4370		2850	4015
	FM330	2195	4080 / 4670		2610	4080 / 4670		3000	4315
	FM350	2295	4280 / 4870		2710	4280 / 4870		3100	4515
	FM370	2395	4530 / 5120		2835	4530 / 5120		3250	4715
	FM400	2595	4780 / 5370		3010	4780 / 5370		3400	4800
3-Stage Full Free Wide View Mast	TFM430	2585	5130 / 5720		2585	5130 / 5720		2820	5050
	TFM450	2660	5280 / 5870		2640	5280 / 5870		2820	5630
	TFM470	2740	5580 / 6170		2740	5580 / 6170		3000	6080
	TFM500	2805	5780 / 6370		2805	5780 / 6370		3100	6280
	TFM550	2940	6180 / 6770		2940	6180 / 6770		3225	6680
	TFM600	3140	6780 / 7370		3140	6780 / 7370		3525	7280

MAST TYPE	MAST NAME	FREE LIFT(mm)		FREE LIFT (mm)	TOTAL WEIGHT (kg)				
		WITH/WITHOUT BACKREST	WITH/WITHOUT BACKREST		H90/H100	H50	H60	H70	H90
		H50/H60	H70						
2-Stage Wide View Mast	M300	205	210	215	7980	8640	9350	12200	12900
	M330	205	210	215	8030	8690	9400	12280	12980
	M350	205	210	215	8060	8720	9440	12360	13060
	M400	205	210	215	8270	8930	9650	12520	13220
	M450	205	210	215	8350	9010	9730	12680	13380
	M500	205	210	215	8430	9090	9810	12820	13520
	M550	205	210	215	8630	9290	10000	12900	13580
M600	205	210	215	8710	9370	10080	12980	13640	
2-Stage Full Free Wide View Mast	FM300	1940 / 1520	1940 / 1520	-	8030	8690	9400	12400	13100
	FM330	2090 / 1670	2090 / 1670	-	8060	8720	9440	12480	13180
	FM350	2190 / 1770	2190 / 1770	-	8100	8760	9480	12560	13260
	FM370	2315 / 1895	2315 / 1895	-	8270	8930	9650	12760	13460
	FM400	2490 / 2070	2490 / 2070	-	8310	8970	9690	12820	13580
3-Stage Full Free Wide View Mast	TFM430	1260 / 1630	1260 / 1630	1470	7980	8640	9350	13050	13350
	TFM450	1360 / 1730	1360 / 1730	1570	8010	8660	9370	13200	13500
	TFM470	1410 / 1780	1410 / 1780	1720	8030	8690	9400	13350	13650
	TFM500	1510 / 1880	1510 / 1880	1820	8060	8720	9440	13500	13800
	TFM550	1630 / 2005	1630 / 2005	1945	8100	8760	9480	13650	13950
	TFM600	1930 / 2305	1930 / 2305	2245	8270	8930	9650	13800	14100

Notice: 1. With side shifter, load capacity subtract 350Kg.  
2. Double front wheels are standard.

## COMFORT & ERGONOMICS

### The Right Truck For The Job

RY 5-10Ton forklift trucks offer load capacities ranging from 5 to10 tonnes, delivering the right model for each specific customer requirement. A wide range of features and options allows you to choose the truck that meets your specific needs and keeps your business performing at the highest possible level.

### Simple to Drive and Operate

Driver productivity has been increased by studying operational needs. Even occasional drivers will find RY heavy duty trucks simple and intuitive to drive. An inching pedal allows even more driving control when approaching racks or picking pallets.

### Easy Entry & Exit

To produce heavy duty forklifts, RY looked at the whole driver-forklift relationship and then designed a heavy-duty truck that provides excellent driver ergonomics. You'll notice the difference before you even start the smooth RY engine. First, a wide step provides easy entry and exit. This is especially welcome in applications.

### Large Operation Space

Once you are on board, ample floor space and a thick moulded rubber floor mat provide a soft, comfortable place for your feet. With the spacious driving space and relaxing foot driving, you will enjoy each driving minute.

### Suspension Seat (Option)

With optional suspension seat, the operator can experience great driving comfort by adjusting the seat backrest, the seat position, and the suspension grade according to different driver's height and weight.

### Excellent Visibility

- Newly designed backrest and fork carriage with excelled fork tip visibility.
- Super Wide view mast with hidden hose design dramatically improves the front and lifting visibility, ensuring the safety of operation.

### Multifunctional LCD Display Meter

All controls and pedals are laid out for optimized ease of use. The layout of meters and gauges in an integrated combination panel makes it simple to monitor functioning at a glance, and the greater variety of meters used assures a better awareness of vehicle status at all times.

### Tiltable Steering Column

When operating the truck, full hydraulic power steering provides effortless manoeuvring, even with heavy loads. The tiltable steering column features a steering knob for a comfortable, relaxed grip on the wheel.

### Smoke Purification Device (Option)

With optional smoke purification device, RY forklift can dramatically purify the harmful gas into harmless carbon dioxide and water vapor, reduce a lot harm to human beings and environment.

### Wide View Cabin (Option)

With full glass cabin and less plastic design, the operator can wide view all surroundings easily.

## HIGH EFFICIENCY & PRODUCTIVITY

### Faster Lifting & Lowering Speed

Considering safety and energy-saving, RY forklift attaches close attention to the development of hydraulic system, and increases lifting and lowering speed to ensure the productivity.

### Precisely Steering

The new axle provides wider steering angles to 85 degree to present a superior smart turning radius of RY forklift, and plus the compact design, RY forklift can navigate the narrow and congested space.

### Higher Acceleration Ability

20% higher acceleration ability, surprisingly shortens the working time at the same working distance and dramatically improves the working efficiency.

### Powerful Engine

The powerful 6-cylinder diesel engine is designed to comply with the emission regulation EN 97/68 stage IIIa.

### Powerful Hydraulic Transmission

The Powerful Hydraulic Transmission covers powerful acceleration response.

### Easy Operation Shift Lever

The shift lever can be operated with just the finger tips, boosting handling efficiency while reducing operator fatigue.

### Snorkel Air Intake

To ensure a supply of clean air for the engine, a snorkel air intake is located on the counter weight.

## SAFETY OPERATION

### Integral Heavy Duty Chassis

An integral heavy duty chassis provides the driver with 20% more protection from falling loads.

### System of Active Stability

With the SAS, the wheel and tyre can be provided from swerving up and down according to the working condition to stay stability.

### Mast Intelligent Buffering System

With intelligently declining buffer sensor on the two ends of the cylinder, the falling speed of the fork slows down automatically before it is 10cm from the ground, and the lifting speed to the top also slows down to avoid quick hit on the top, it super increases the safety of the goods and forklifts.

### Parking Brake Warning Buzzer (Option)

An automatic-style parking brake ensures of the convenience and safety. The warning buzzer will sound when the operator leaves the seat without parking the forklift.

### Operator Presense Security System (Option)

With operator presense security system, RY forklift can have the forklift stop moving forward when the operator leaves the seat which ensuring the safety of goods and people around at emergency situation.

## SUPERIOR & ECONOMIC SERVICEABILITY

### Easy Service and Maintenance Design

The bolt mounted foot step cover can be easily taken off to do inspection and service.

### Reliable Hydraulic System

With reliable hydraulic design and components, the hydraulic components are with high durability which can lower the cost in repair and replacement.

### Central Integrated Electric System

The central integrated design of the electric system enables the service to be easier and faster.

### Strong Engine Hood

The engine hood is completely sealed for maximum comfort, and opens fully to a wide 85°. A hood damper reduces the effort needed to open the hood.

### Radiator Cover

A sealed design is used for the radiator cover as well, and easy access is assured by the handy damper, which makes opening and closing the cover a snap.

## RELIABLE RY FORKLIFT

### Reliable Forklift Quality

With the international testing standard, more reliable supplier chain, higher quality control to ensure the stability and quality of forklifts.

### Perfect After Sales Service System

With perfect after sales service and I-NET system, RY forklift can analyze each forklift issue easier, faster and more accurate.

### Comprehensive Parts Supply System

Parts supply system complied with multi-functional parts warehouse and I-NET system, RY forklift can provide clients with different type spare parts in time and accuracy.

### Experienced Technical Support Team

There are very experienced technical support team in RY forklift to provide professional training to clients from different country.

## OPTIONAL ATTACHMENTS

Integrative Side Shifter

Fork Positioner

Fork Clamp

Block Clamp

Rotating Fork

Roll Clamp

Bale Clamp

## INVISIBLE VALUE

LED Combination Lamp & Reverse Warning Light

Excellent Heat-releasing Performance

Integral Overhead Guard

Stronger Wide View Mast

## STANDARD EQUIPMENT

### Drivability

Adjustable Steering Wheel  
Cup Holder  
Luxurious Floor Mat  
Large Floorboard  
Luxurious Accelerator and Brake Pedal

### Safety

Multi-functional Combined Switch  
Multi-functional Safe Seat  
Mast Intelligent Buffering System  
Reverse Alarm Light  
Front Combined Lamp  
Rear Combined Lamp  
Rearview Mirror  
Buzzer  
Electric Horn

### Productivity

Hydraulic Transmission  
Double Air Filters  
Large Volume Water Tank  
Large Exhaust Window  
Hour Meter  
Charging Indication  
Pre-heat Indication  
Oil Pressure Indication  
Fuel Gauge  
Water Temperature Gauge  
2-Stage 3m Wide View Mast  
Bar Type Forks  
Load Backrest  
Overhead Guard  
Pneumatic Tyres

Double Front Tyres  
Vertical Exhaust  
LED Lamp  
2nd Valve and Pipe  
NOK Seals  
RY Label  
Integral Covering  
Engine Cover Lock  
Tool Box  
Operation Manual  
Maintenance Manual  
Spare Parts Manual  
Inspection Certificate

## OPTIONAL EQUIPMENT

### Mast Variations

2-Stage Full Free Wide View Mast  
3-Stage Full Free Wide View Mast

### Valve & Pipe

3rd Valve & Pipe  
4th Valve & Pipe

### Attachment

Cascade Side Shift  
Integrative Side Shift  
Special Attachments

### Efficiency and Stability System

Finger Tip Control System  
Widen Backrest  
Widen Carriage and Backrest

### Safety System

Mast Locking System  
Mast Top Limited System  
Seat Sensor  
Seat Belt Alarming Device  
Hand Brake Alarming Device  
Engine Flameout Device

Solid Tyres  
Fork Extensions  
Extended Forks  
Rear Head Light  
Cabin, Heater  
Air Conditioner  
Wind Screen  
Fire Extinguisher  
Suspension Seat  
Engine Fan Cover  
Extra Water Tank  
Sound-proof Cover  
Partial Soot Filter



**ROYAL FORKLIFT (JIANGSU) CO., LTD.**